

Product update and project review

TROVE

ISSUE 12

Inside

Ladyspring Lodge - Essex
Residential Property - Dorset
Perran Sands - Cornwall
Royalty House - London

Product focus

Chalet - Lamas

TROVE

Issue 12

Autumn is upon us - a season of change and renewal. These are important themes in the work we have undertaken this quarter. This issue of Trove showcases a selection of our finest projects in the residential, leisure and commercial spaces.

Our product FOCUS this issue is inspired by nature, evoking the timeless essence of oak. Elsewhere, an autumnal kaleidoscope of colour enlivens a one-of-a-kind resort restaurant. Durability and sustainability throughout the seasons are a constant concern, consistently considered in each engagement.

Discover in these pages how to bring a vision to life using natural stone and exceptional porcelain. Explore our range of premium architectural projects and be inspired by ideas for your next venture.

Trove is presented to you by Kinorigo - the most committed supplier of natural stone and finished porcelain in the UK. Our team of experts would love to discuss the perfect components for your project, providing invaluable advice and assistance to complement our materials. Whether you're an architect, contractor, business owner or individual with a vision, please do get in touch.

We hope you enjoy this issue.

Trove Editorial Team
Kinorigo

KINORIGO





Contents

04 Ladyspring Lodge

Carefully selected stone brings whole new look to luxury home.

06 Residential Property

Bright, beautiful stonework enables creation of unique house and spa.

10 Perran Sands

Rustic shades and durability a focus for singular restaurant with a colourful character.

12 Royalty House

Congruence of graceful interior and exterior stone a must for crisp, contemporary offices.

14 Product FOCUS

Chalet-Lamas elegantly evokes the ambience of oak, while bearing all the benefits of porcelain. It boasts six beautiful shades, embraces advanced Microban antibacterial.

Cover project

06 Residential Property



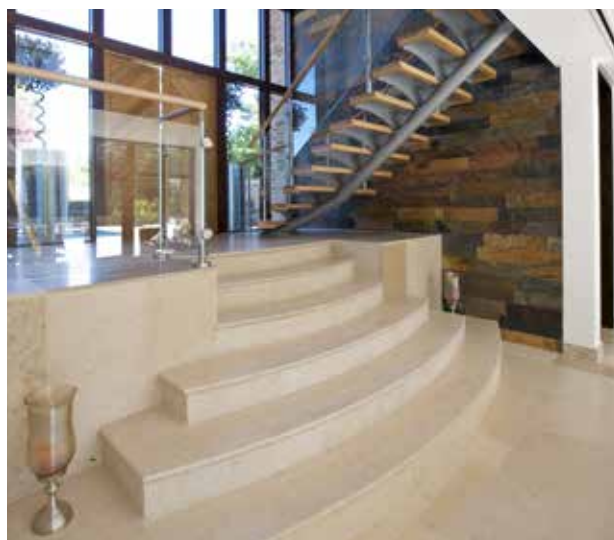
Ladyspring Lodge

Essex

We worked with the contractor on this private residential project, providing samples to simplify the selection process before supplying an array of bespoke-cut tiles. It was important that the overall quality and design added value to the property. Our beautiful premium products were able to achieve the desired results.

Golden Sandstone was used for the swimming pool due to its nonslip properties. Moleanos was selected for the stone steps, bullnosed to specification from the Computer Assisted Design (CAD). One bathroom contained custom mosaics to complement the use of Mocca cream limestone. Another was fitted with Azul Valverde - a darker limestone speaking style and substance. For feature walls, Sunset from our Parallel range created a warm and earthy effect.

Everyone pleased with the project's conclusion, we were commissioned for a further two houses - including the home of the building company's director.



Stone type

INTERNAL
Product range: **Palette**
Name: **Azul Valverde**
Finish: **Honed**



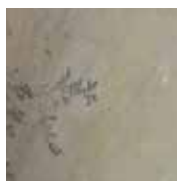
Stone type

INTERNAL
Product range: **Palette**
Name: **Mocca**
Finish: **Honed**



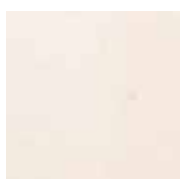
Stone type

INTERNAL
 Product range: **Parallel**
 Name: **Sunset**
 Finish: **Riven**



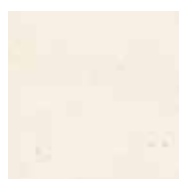
Stone type

EXTERNAL
 Product range: **Palette**
 Name: **Golden Sandstone**
 Finish: **Sawn**



Stone type

Product range: **Palette**
Name: **White Limestone**
Finish: **Sand Blasted**



Stone type

Product range: **Porcelain**
Name: **Sonika**
Finish: **Bush Hammered**

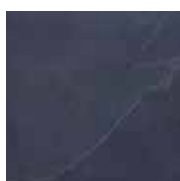
Residential Property

Dorset

For this stunning premium residential project, we were asked to collaborate with the architect, contractor and developer to supply natural stone that was in keeping with the minimalist and sophisticated design, without compromising on durability and suitability for the different areas of the property. After exploring the many possibilities, we were able to guide the designer down the best avenue available.

We proposed White Limestone for the pool and spa areas, providing a bright, clean finish. Regency Black was elected for the master bathroom, with shade variation to create visual texture. In each area, honed tiles displayed a silk-smooth finish, while sand blasted and riven tiles were employed on the floor to ensure slip resistance. We constructed the pool copings to be 20mm thick, with the underside bonded to reduce costs, while still maintaining a solid look and feel.

Sonika Natural was selected for external tiling, as it was a beautiful match for the limestone inside, requiring minimal maintenance. The brief was fulfilled with impressive results.



Stone type

Product range: **Palette**
Name: **Regency Black**
Finish: **Riven and Honed**



Stone type

Product range: Palette
Name: White Limestone
Finish: Sand Blasted



Perran Sands

Cornwall

This colourful project is a perfect example of our stone expertise at work in a singular setting, full of character. We collaborated with the architect and contractor to ensure the initial design of this holiday resort restaurant maintained both style and practicality. The designer originally favoured Burnt Heather tiles, however, our considered recommendation for the appropriateness of Rustic Harmony was taken on board.

Rustic Harmony is a colourful slate radiating a kaleidoscope of autumn shades: rustic gold, olive and ochre over a green-grey base. It is practical, hardwearing and frost-resistant - and also offers excellent value for money.

It was the perfect choice for an outside area that would be prone to high footfall, while providing a colourful pallet for the restaurant design. We used a sawn edge finish in a random chapel pattern. With the correct seal, we were able to provide maximum protection against staining, while still allowing the material to breathe, limiting freeze-thaw and mineral discolouration for maximum durability. Everyone was extremely happy with the results.



Stone type

Product range: **Palette**
Name: **Rustic Harmony**
Finish: **Riven**



Royalty House

London

These modern, commercial offices are housed in one of London's prestigious A-Grade buildings. We worked with the architect and contractor to adorn the renovation with the right materials.

The original specification called for Portland stone, however, the architect yearned for something similar yet more hardwearing for the office interior. We presented her with Capri.

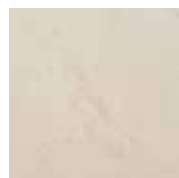
Not only did we obtain the best quality Portland Whitbed, providing excellent value for money, but we also had our expert masons engage their skilled precision to create the radial stair design and external steps and ramps. We worked with Piccante Camel to create a complementary feature along the main wall.

The overarching result was a crisp, clean and contemporary corporate space. The project ran smoothly, with everyone involved very happy with the service.



Stone type

Product range: **English Stone**
Name: **Portland Whitbed**
Finish: **Honed**



Stone type

Product range: **Palette**
Name: **Capri**
Finish: **Honed**



Stone type

Product range: **Piccante**
Name: **Camel Quartzite**
Finish: **Rough**

PRODUCT FOCUS

Lamas

A member of **Chalet** (wood-effect Porcelain), one of our most recent ranges, Lamas elegantly evokes the ambience of oak, while bearing all the benefits of porcelain. In many ways, Lamas is superior to natural wood: it is impervious to scratching and staining; brilliantly strong; naturally slip-resistant; extremely low maintenance; and its colour will never fade or distort.

Lamas embraces Microban technology, which provides continuous, guaranteed anti-bacterial protection - perfect peace-of-mind for family homes or for hygiene-sensitive environments, such as hotel spas.

Emanating all the warmth and charm of wood, Lamas is available in six oaken shades: Antique, Bleached, Light, Oiled, Painted and Pearl. Our Oiled, Painted and Pearl options can be created in our revolutionary 3mm-tile. These three shades can come to life in the standard Natural finish but also allow for a special Deck finish, with ribbed effect and a slip-resistance rating of R11.

Lamas offers you a unique design option when it comes to aesthetically finishing your floor. Wood-effect flooring is a popular choice for high-end residential projects, especially for use in living rooms, hallways and home offices - or anywhere the elegance of wood is desired and the efficiency and economy of porcelain appreciated.





Stone type

Product range: Lamas

Name: Pearl Oak

Sizes: 150 x 1200mm

**For more information
or to place an order**

call 024 7642 2580

email info@kinorigo.com

KINORIGO