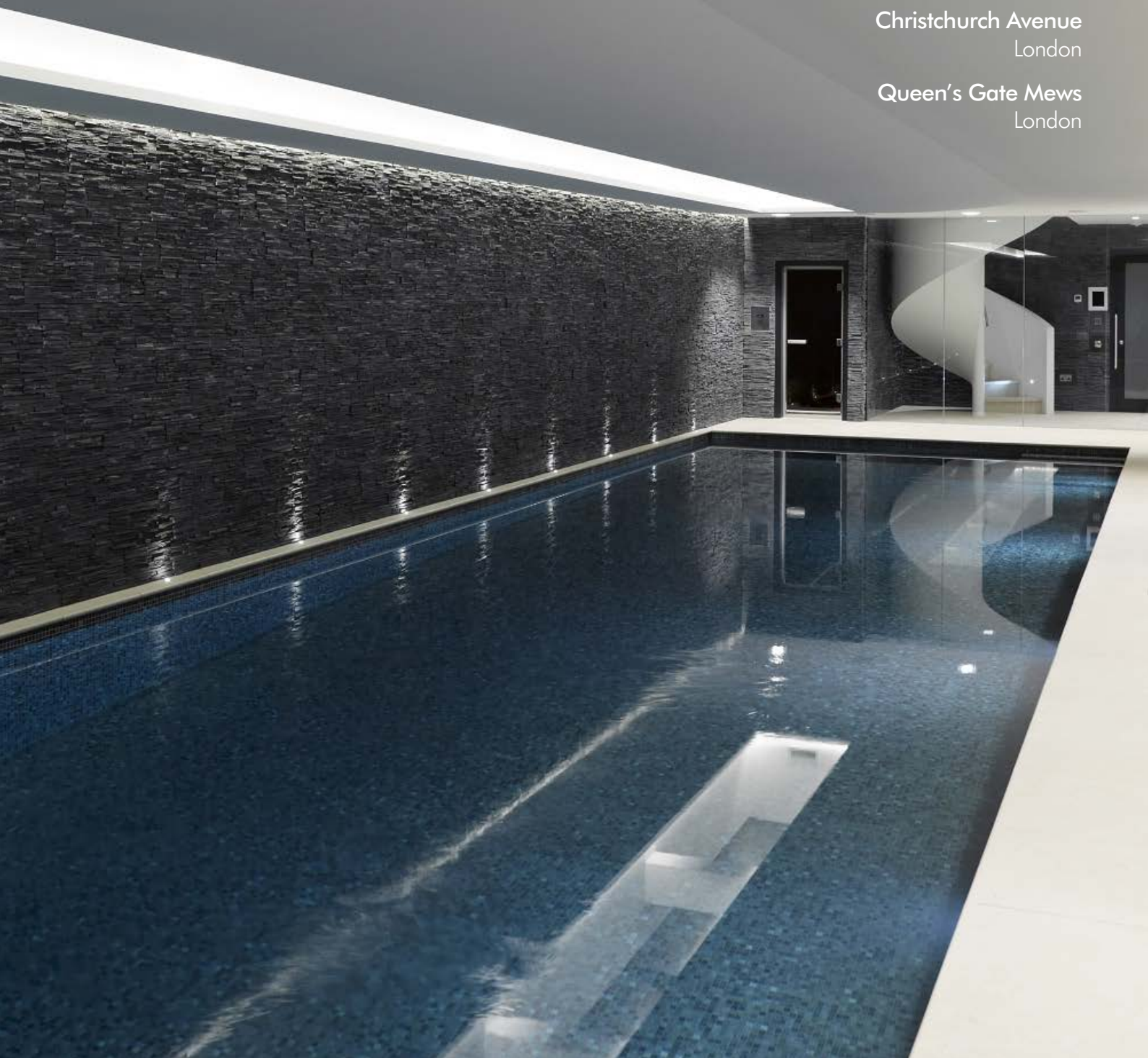


KINORIGO Product update and project review

# TROVE

Christchurch Avenue  
London

Queen's Gate Mews  
London



# TROVE

Welcome to the latest edition of TROVE

## ORIGINS OF OUR NAME

Many of you have been asking about the origins of our name KINORIGO. We're a family business, so enthusiasm for natural stone and construction is in our blood. We treat all other materials in the same light and are passionate about sharing this with you. KIN therefore depicts the family foundations of the firm and ORIGO, the latin word for 'origin' suggests an original source and so helps tell our story. With the world as our showroom we feel that the word perfectly captures our global identity whilst not straying far from our heritage.

We want to share with you our latest projects and make you a part of our quest to enhance the spaces we live in. Our innovation with regards to porcelain goes without saying, and of course we can always find new ways of manufacturing stone.

Every new project is a fresh challenge and this motivates us to empower you to join us in the relentless drive for better.

See you soon.

**Gavin Worsley**  
MD KINORIGO



Step treads from natural stone

## Contents

## Cover Project

### 04 Christchurch Avenue

Italian porcelain set between classic Edwardian and modern steel

### 10 Queen's Gate Mews

Portugese and Spanish limestone adds subtle luxury to London residential home



Moleanos Stone





## Christchurch Avenue

London

When anyone embarks on a project they will endure the ups and downs that come naturally with the challenge. Assem is an architect working for Base Associates and it became apparent through all the meetings, phone calls, emails and site visits that he had a vision, one that we are proud to have been a part of.

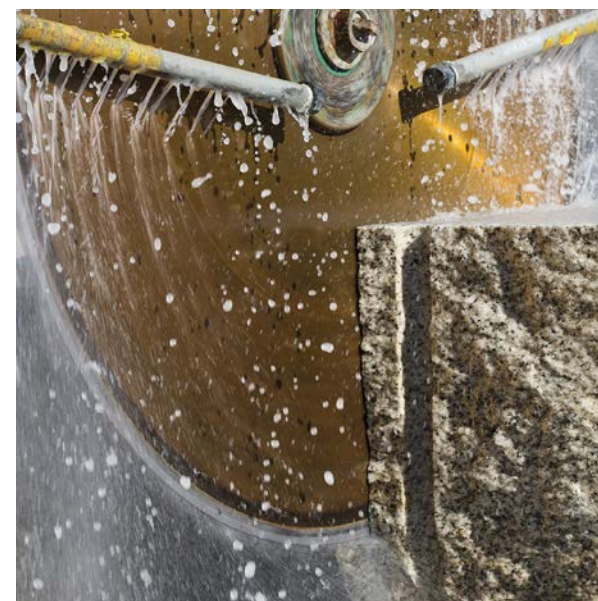
Christchurch, a residential project in London for a private client, comprises a juxtaposition of classic Edwardian style with modern glass and striking grey steel which is eye catching. This bold design compliments both a modern and classic styling throughout the property, creating a luxuriously comfortable family home.

Meetings with Aseem and the client revealed the main challenge of this project: balancing the slip resistance of the tiles around the pool and external areas with the desire for a clean, consistent palette throughout the property.

It was clear from discussions with Aseem and the client that the young age of his children was the driver for this concern. He didn't want to compromise on the aesthetics, and rightly so. After further discussions we ruled out natural stone considering the low maintenance that porcelain could offer, and were left with a challenge.

We needed a single, contemporary porcelain that would add value to the property by delivering a desirable aesthetic, whilst also meeting safety requirements.

WE NEEDED A SINGLE,  
CONTEMPORARY  
PORCELAIN THAT  
WOULD ADD VALUE  
TO THE PROPERTY  
BY DELIVERING A  
DESIRABLE AESTHETIC.



“KINORIGO understood what the client’s main concerns were and helped us achieve the best result.”

Aseem Skeikh, Base Associates  
Architect



Zarina porcelain floor tiles from Italy – Bushammered  
[kinorigo.com/zarina](http://kinorigo.com/zarina)



#### LUXURY RESIDENTIAL

“We were looking at many options for this project but KINORIGO’s product and service were the best of the bunch.”

Aseem Skeikh, Base Associates  
Architect



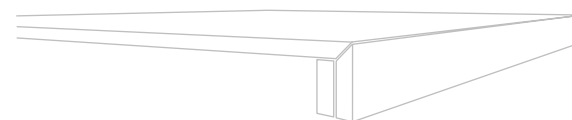


“WE HAD A CLEAR IDEA  
OF WHAT WE WANTED AND  
KINORIGO WERE EXCELLENT  
IN HELPING US ACHIEVE IT.”

Zarina porcelain tiles from Italy – Bushammerd  
[kinorigo.com/zarina](http://kinorigo.com/zarina)

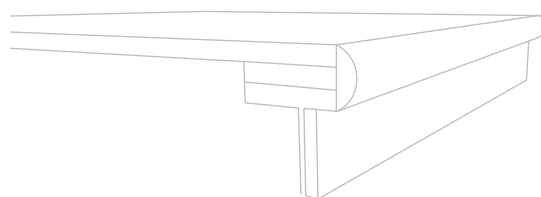


Zarina porcelain tiles from Italy – Natural  
[kinorigo.com/zarina](http://kinorigo.com/zarina)



#### Square Nosed Coping used for Internal Treads:

- Made from 10mm thick Zarina
- Mitred and Resin fixed
- Laid directly on cast concrete steps with adhesive



#### Rounded Pool Coping for Internal Pool:

- Made from 10mm thick Zarina
- Specialised technique for rounded porcelain finish
- Bush hammered top with a smooth coping face

“KINORIGO provided us  
with an exceptional  
service on a challenging  
project whilst ensuring  
the delivery of a high  
quality product.”

Aseem Skeikh, Base Associates  
Architect

Our solution was ZARINA, a tile we chose for its consistent colouring throughout external and internal spaces without compromising on slip resistance.

Furthermore, the technical profiles of ZARINA offered bespoke options for the client, including a slip resistant pool coping with a smooth rounded face to make it comfortable under foot. The square nosed coping was also used for the internal spiral staircase, adding to the seamless aesthetic usually only provided by natural stone.

This project used a high quality technical product to deliver the peace of mind that the client was looking for.



To order your samples

Please visit [www.kinorigo.com/zarina](http://www.kinorigo.com/zarina)



Zarina porcelain tiles from Italy – Honed  
[kinorigo.com/zarina](http://kinorigo.com/zarina)

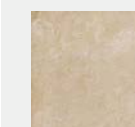
## Project Specifications

### Origin + Material

Italy – Porcelain ZARINA

### Product

Zarina 600 x 600mm in Natural and  
Bushammerd with Technical Copings



ZARINA  
Porcelain  
Natural + Honed + Bushammerd  
(technical copings)  
600 x 600mm



# Queen's Gate Mews

London

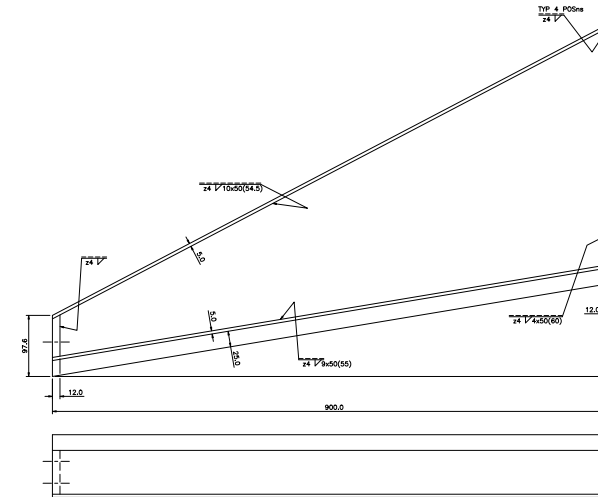
London is home to many, but few could lay claim to a home as sublime as this Mews designed by the creative imaginations at MSMR Architects .

Queen's Gate Mews is an innovative reconstructed property in the heart of London, illuminated by a top-lit internal atrium serving the lower levels and newly excavated basement with a generous supply of natural light.

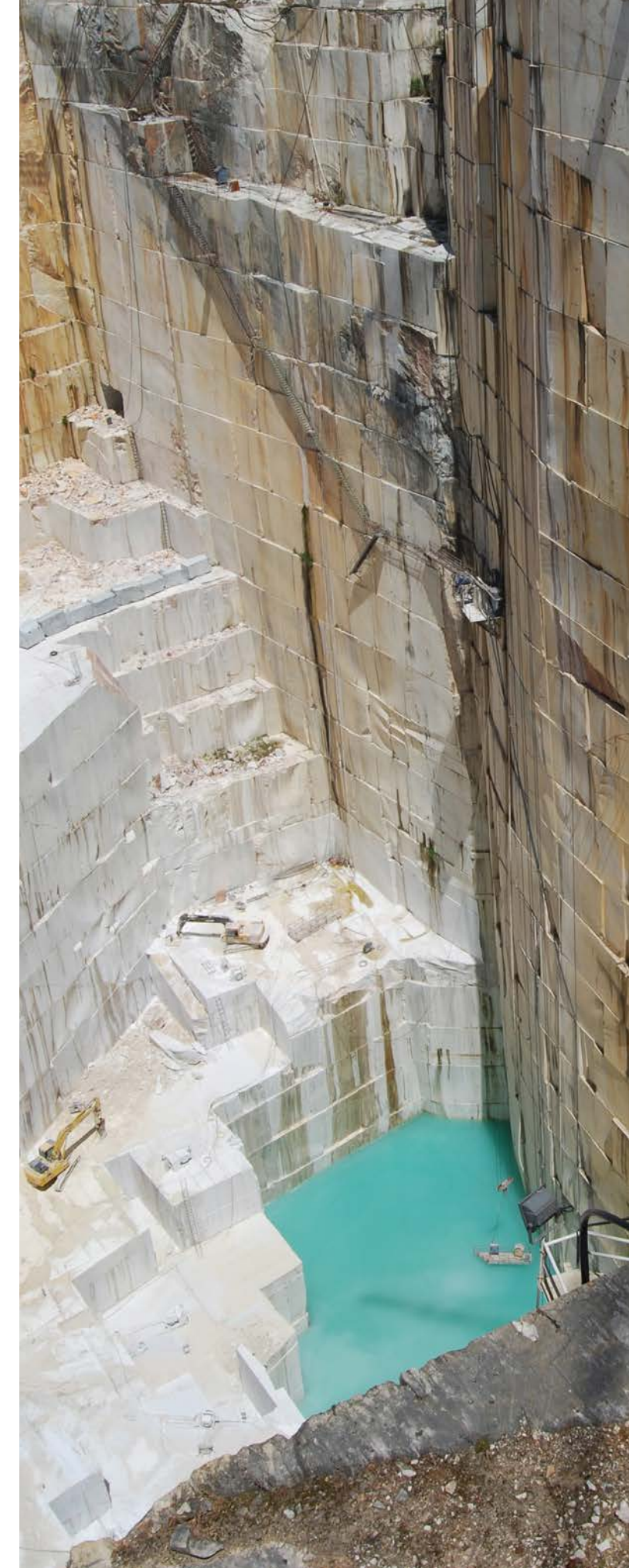
The materials needed to provide subtle luxury to support the minimalist design, without drawing attention away from its simple sophistication.

Our initial conversations with Angelika were simple. She had a vision for a high-end residential property in London with clean lines, warm tones and natural stone. What Angelika needed were large samples of the materials to give her and the client confidence that the finished product would fulfil the vision.

WE SUPPLIED THE CLIENT WITH LARGE SAMPLES OF CREMA MARFIL AND MOLEANOS FROM SPAIN AND PORTUGAL.



WE WORKED CLOSELY WITH THE ARCHITECT AND CLIENT TO ENSURE THEIR AESTHETIC DETAIL WAS NOT COMPROMISED.







Crema Marfil bath tiles and top from Spain – polished  
[kinorigo.com/crema-marfil](https://kinorigo.com/crema-marfil)

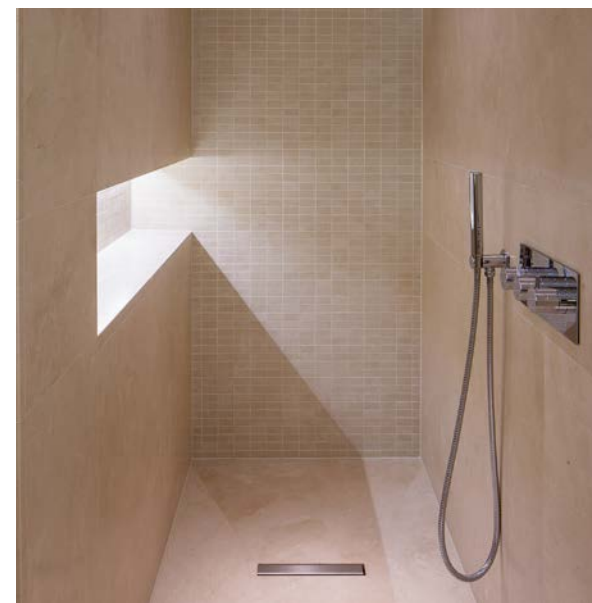
LARGE PANELS OF TOP  
GRADE CREMA MARFIL  
AND A SOLID BATH TOP  
PRESENTED CHALLENGES  
BOTH TECHNICALLY  
AND PHYSICALLY.



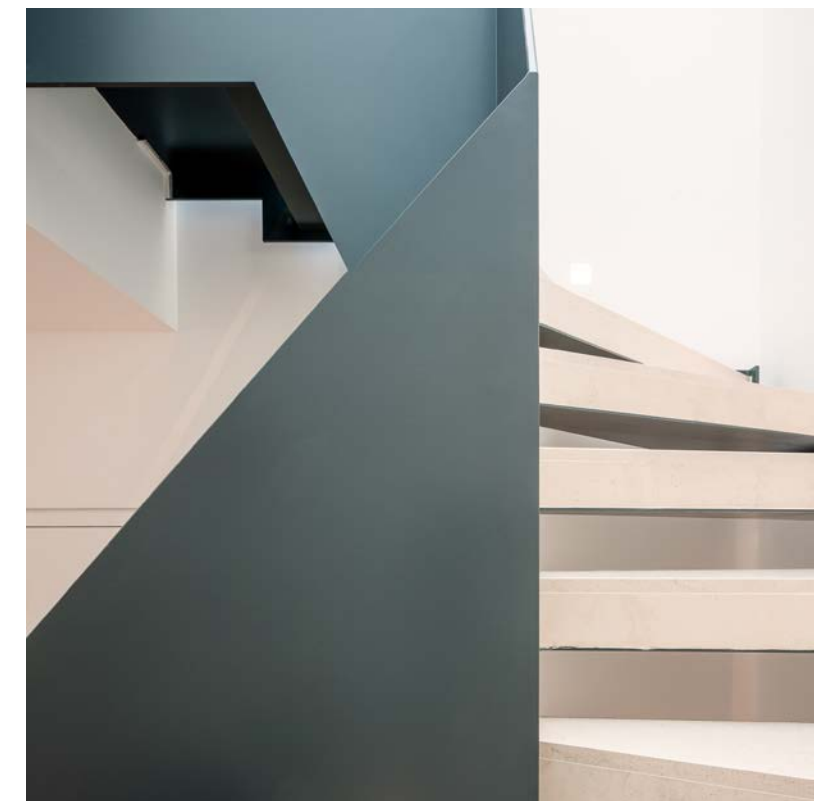




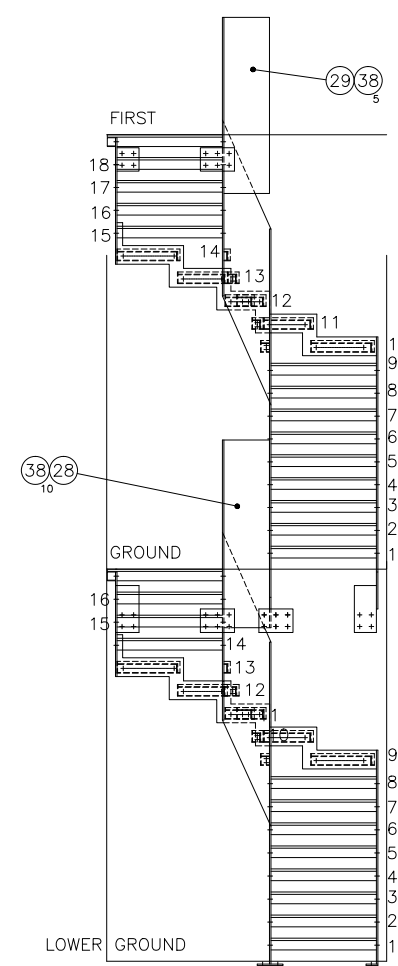
Moleanos floor tiles from Portugal – honed  
[kinorigo.com/moleanos](http://kinorigo.com/moleanos)



Crema Marfil Mosaics – honed and  
 polished floor and wall tiles from Spain  
[kinorigo.com/crema-marfil](http://kinorigo.com/crema-marfil)



Moleanos floor tiles from Portugal – honed  
[kinorigo.com/moleanos](http://kinorigo.com/moleanos)



We appreciated the strict material grade requirements when we supplied Angelika of MAMR and the client with large samples of Crema Marfil and Moleanos for the bathrooms and staircase. The nature of these materials meant there were many grades available; and as such numerous samples were crucial in ensuring they were comfortable with the final choice.

To guarantee the quality and lead-time of the products, we checked that the materials imported from Spain and Portugal met both the client's top grade expectations, and the level of veining / shelling in line with our own.

The challenge after shipping the imported materials was fitting them. We worked closely with the architect and contractor to ensure the aesthetic detail was not compromised and the approach for installation was clear. Large panels of top grade Crema Marfil and a solid bath top presented challenges both technically and physically, but after some solid team work with main contractor Paul at Room Below the success was evident; "the finished product was excellent", he said.

KINORIGO are delighted to have been part of such a visually stunning project. We look forward to the next adventure with Angelika and the creative minds at MSMR.

## Roundup

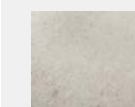
### Area + Material


Portugal – Limestone MOLEANOS

Spain – Limestone CREMA MARFIL

### Product

Crema Marfil and Moleanos – bespoke sizes  
 in honed and polished finishes

 MOLEANOS  
 Limestone  
 Honed  
 Bespoke sizes

 CREMA MARFIL  
 Limestone  
 Honed/Polished  
 Bespoke sizes



### To order your samples

Please visit [www.kinorigo.com/moleanos](http://www.kinorigo.com/moleanos) and [www.kinorigo.com/crema-marfil](http://www.kinorigo.com/crema-marfil)



# TROVE

To order samples  
and for more information

[kinorigo.com](http://kinorigo.com)



## KINORIGO

Woodland House  
204 Duggins Lane, Tile Hill, Coventry CV4 9GP  
**Telephone** +44 (0) 24 7642 2580  
**Email** [info@kinorigo.com](mailto:info@kinorigo.com)  
**Website** [www.kinorigo.com](http://www.kinorigo.com)

The Keystone Company UK Ltd. trading as Kinorigo

